

Thunder

80 Channel Audio/Data/Intercom Link



Maximum flexibility and convenience for audio, intercom and data connectivity.

Thunder is the newest generation high-volume audio/data/intercom transport link from Grass Valley, a Belden Brand. Thunder transports up to 80 audio, intercom, or data paths, configurable in 8-path groups (10 groups total), all on one or two strands of fiber, at the lowest price and most compact size ever available.

Simply equip the compact 1 RU frame with the appropriate Thunder Bolt I/O cards to create a fiber optic link that can solve virtually any audio/intercom/data connectivity situation in the teleproduction environment.

You buy only the components that you need. Individual analog and AES breakout panels as well as data and intercom devices can be configured in any combination to create an audio system that is perfectly suited to your particular application.

Whether you need a system that requires all 80 channels of audio, a mix of audio, data or GPI channels, or even all data or GPI channels, Thunder provides maximum flexibility and convenience.

Analog audio signals can even be converted to AES format, and vice versa, by just configuring Thunder with an analog input or output Bolt card at one end of the system and an AES I/O Bolt card at the other.

Up to ten internal Bolt I/O cards can be installed in a frame.

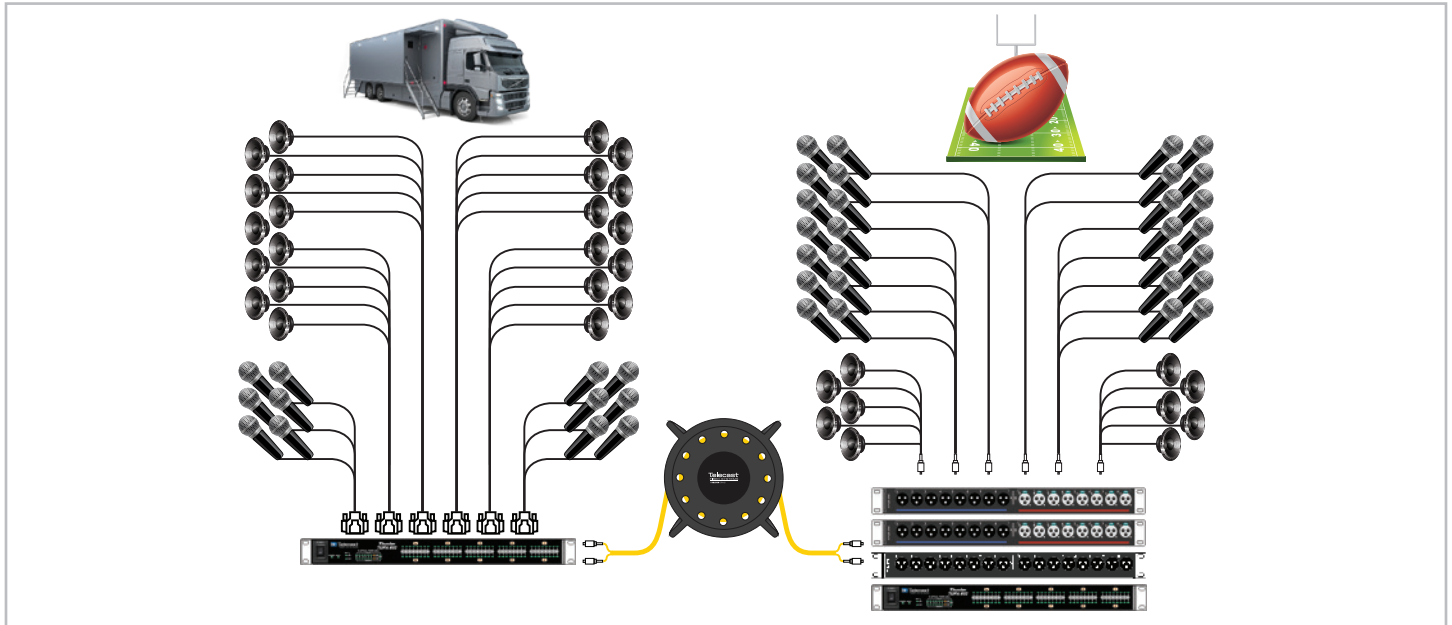
Six Bolt cards are available, along with their signal complement:

- Analog Audio Input; 8 channels
- Analog Audio Output; 8 channels
- AES Input; 4 channels (8 analog when decoded)
- AES Output; 4 channels (8 analog when decoded)
- Multiformat digital (RS-232/422/485); 4 channels, bidirectional
- GPI (general purpose, dry contact, SPST remote switch closures); 8 channels, bidirectional

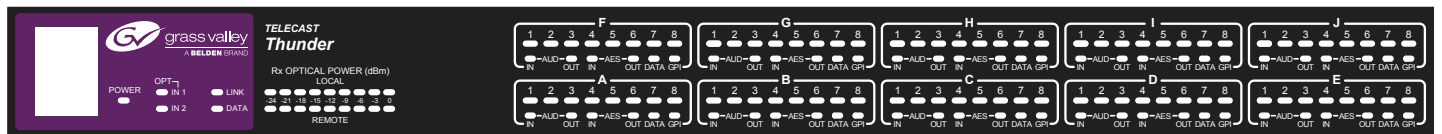
Thunder 80 Channel Audio/Data/Intercom Link

KEY FEATURES

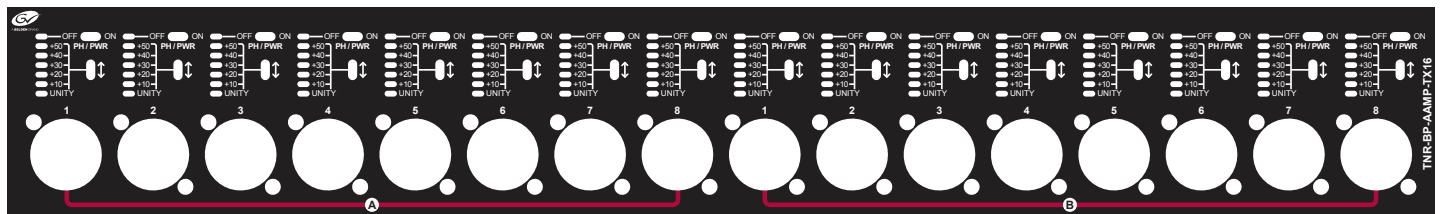
- 40 km (24.85 mi.) range (20 dB link budget) on one or two single-mode fiber strands
- Up to 80 audio or 40 data paths, configurable in 8/4-path groups (10 groups total)
- Superior audio quality
- 1 RU Thunder main chassis plus 1 RU and 1.5 RU breakout panels
- 8 or 16 channels per breakout panel
- 1 RU Thunder main chassis also provides two additional bidirectional channels of multiformat data (RS-232/422/485), one channel of GPI and a BNC input connector for synchronizing AES audio output cards in the Thunder chassis to house clock timing
- Breakout panels can be mounted in front or behind the Thunder main chassis, and interconnected with DB-25 cables (supporting 8 channels each)
- Optional redundant fiber IN and OUT ports, both
- Integral optical power monitoring for local and remote signal strength



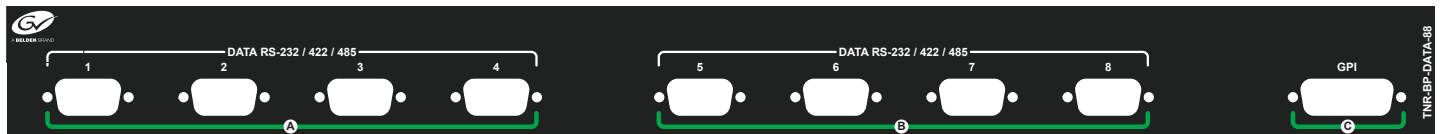
4026-09



4026-50



4026-61



ORDERING

Contact your Grass Valley representative.



GVB-1-0184A-EN-DS

WWW.GRASSVALLEY.COM

Join the Conversation at **GrassValleyLive** on Facebook, Twitter, YouTube and **Grass Valley - A Belden Brand** on LinkedIn.



Belden, Belden Sending All The Right Signals and the Belden logo are trademarks or registered trademarks of Belden Inc. or its affiliated companies in the United States and other jurisdictions. Grass Valley is trademark or registered trademark of Grass Valley. Belden Inc., Grass Valley and other parties may also have trademark rights in other terms used herein.

Copyright © 2014 Grass Valley. All rights reserved. Specifications subject to change without notice.